

ShockDot Impact Indicator

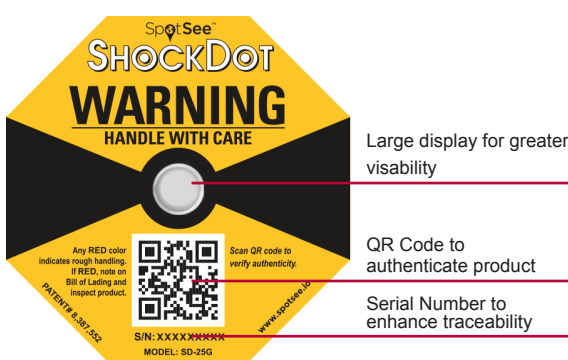
ShockDot impact indicators are a proven visual deterrent to improper handling and reduce damage by up to 60%.



Protect your investments. Drive down damages. Improve your margins.

ShockDot is a cost-effective solution that detects the mishandling of products and packages during shipment. Alerting handlers that a package is being monitored and requires extra care will ultimately reduce damage related costs. ShockDot indicators turn red when a potentially damaging impact occurs. The indicators are tamperproof and serialized to ensure the user that the device has not been switched during transport. The QR code on each label allows customers to verify that they have received the quality and reliability of an authentic ShockWatch product.

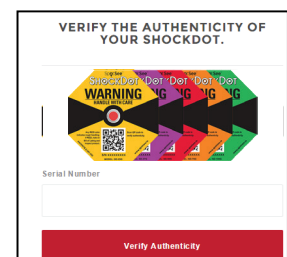
ShockDot indicators are a simple solution for identifying shipments that may be damaged and driving accountability in the supply chain.



Benefits:

- Provides indisputable evidence of mishandling
- Alerts recipient to inspect contents before acceptance
- Promotes chain of accountability for all product handling
- Confirms effectiveness of packaging
- Helps increase quality of product from dock to dock

Verify authenticity of the ShockDot by scanning the QR code and entering in the serial number



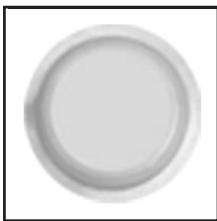
Interpreting the ShockDot

If a package has not been mishandled, the ShockDot indicator will remain white. If the package has been dropped, the ShockDot indicator will show full or partial red coloration. Any red in the white area of the ShockDot indicator window alerts receivers to inspect the package for potential damage.

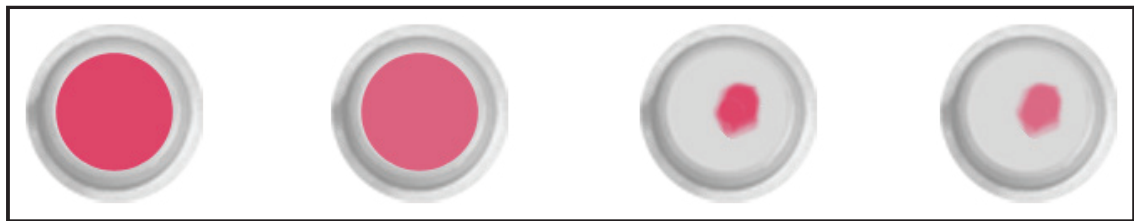
Below are examples of ShockDot results:

No activation:

None

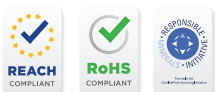


Activation:



Key Specifications	
Sensitivity range	25 - 100G
Impact duration	0.5 - 50ms
Tolerance	±15% at 20°C / 68°F, 1 ATM
Operating temperature	-25°C to 60°C / -13°F to 140°F
Security	Tamperproof, Serialized and QR code
Adhesive	Acrylic
Product life	2 years from date of sale, when stored at 20°C / 68°F, 1 ATM
Storage recommendations	20°C / 68°F, 1 ATM, 0-99% RH Non-condensing
Weight (varies by sensitivity)	1.98g
Dimensions	3.8 in x 3.8 in / 96.52 mm x 96.52 mm

Product Description	Part Number*
100G (Green)*	SD-100G
75G (Orange)*	SD-75G
50G (Red)*	SD-50G
37G (Purple)*	SD-37G
25G (Yellow)*	SD-25G
Companion Label - 200/roll	26106
Companion Label - 500/roll	26107
*Minimum order quantity: 100	



LogiMon Solutions B.V.
Hameinde 1
7371CS Loenen Gld
The Netherlands

SHOCKWATCH®