

## SpotBot® 4G Plus Overview

**Supply chain transparency is critical in running an effective operation. Track and protect your assets from damage causing conditions with the SpotBot 4G Plus.**

The SpotBot® 4G Plus is the ideal solution for connecting you to your supply chain. Delivering tri-axial impact, temperature, and humidity monitoring along with location tracking, the SpotBot connects you to your assets via the SpotSee Cloud. Log-in to see the status of your shipment and receive alerts throughout its journey.



### Features

#### World Class Monitoring

Companies around the world depend on SpotSee for impact monitoring solutions. The SpotBot 4G Plus measures impacts between 3.5 and 100G, meaning that it can be used to monitor a broad spectrum of assets from medical devices to automotive parts to power generation equipment. Additionally, the accuracy of the SpotBot's temperature and humidity sensors is ideal for monitoring sensitive biotech, pharmaceutical, or diagnostics products.

#### Long Battery Life

A connected supply chain monitor is not valuable if it stops recording halfway through the journey. The SpotBot4G Plus battery will last between one and seven years, depending upon the reporting interval. With long battery life, users do not need to worry about missing important information or constantly changing out batteries.

#### Accurate Location Data

SpotBot 4G Plus employs three different approaches to provide the most accurate location reporting available at any given time. The device will utilize GPS or proximity to WiFi signals or cellular towers to deliver location information. The SpotBot also has geofencing capabilities, so that users are notified when an asset reaches its destination.

#### Global Communication Capabilities

The SpotBot 4G Plus communicates via the 4G LTE-M cellular network. This network provides better power efficiency and signal range than 4G LTE, making it an ideal solution to monitor assets moving around the globe. In addition, the SpotBot can be configured to recognize and communicate via known WiFi networks.

#### Easy to Use

The SpotBot 4G Plus unit and trip settings are configured via a simple web application. Information from each trip is stored in the secure SpotSee Cloud and can be easily downloaded to provide the time, location, and severity of excursions experienced during transit.



## SpotBot® 4G Plus Overview

### SpotSee Cloud Features:

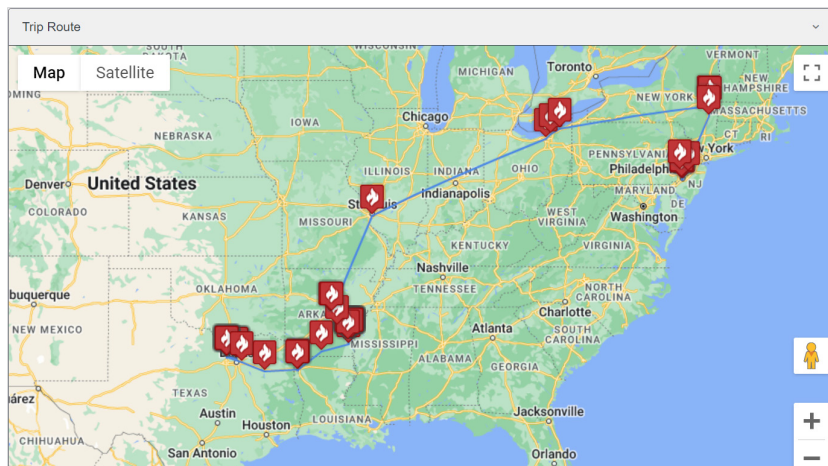
#### 1. Timely reporting of unacceptable conditions

**Example:** Monitor your shipment's temperature, humidity and impact.



#### 2. Reporting functions to summarize location and condition of shipments

**Example:** View impact events details, including location and time.



## SpotBot® 4G Plus Overview

### Key Operating Specifications

<b>Measured Parameters</b>	Impact, Temperature, Humidity, and Location
<b>Acceleration Range</b>	3.5G to 100G
<b>Acceleration Filter Bandwidth</b>	200 Hz
<b>Temperature Range</b>	-20°C to 60°C
<b>Temperature Accuracy</b>	+/- 0.5°C
<b>Humidity Range</b>	10-90% RH
<b>Humidity Accuracy</b>	+/- 2% RH
<b>Sample Rate (Temperature / Humidity)</b>	15 minutes to 24 hours (programmable)
<b>Reporting Interval / Battery Life</b>	1 hour/1 year 2 hours/2 years 4 hours/2.5 years 8 hours/5 years 12 hours/6 years 24 hours/7 years