



LOGIMON
LOGISTICS MONITORING SOLUTIONS

Unisto Straplock F7115



UNISTO

A Unisto speciality to seal PP strapping on pallets and boxes. Used in industries such as Transport, Retail, Pharmaceuticals and Cash in Transit. The Unisto Straplock is the ideal solution for protecting high value goods, rendering strapping tamper-evident. Serial numbering and optional bar coding enables easy recording of the seal numbers. Company name / logo provide clear identification. Clear marks on base and top section to check that the seal is locked securely. F7000 fits for straps 6 - 12 mm and F7115 for straps 12 - 19 mm. To close the seal there are a manual and a fully portable, electric locking tool available.

Features of this security seal

Type of Seal

Special Seals

Application

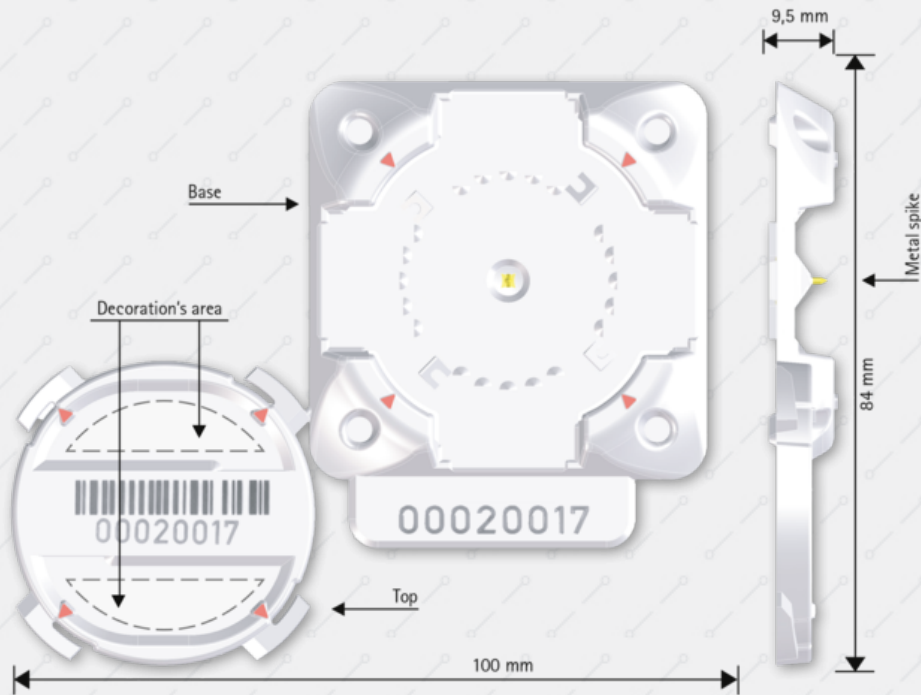
PP strapping on pallets and boxes, diverse

Unisto Straplock F7115

- › The F-7115 seal is adapted to seal pp strapping of 12 to 19 mm width (0,7 mm maxi thickness, bigger thickness on request)
- › The metal spike on the base guarantees easy penetration of the strap
- › Clear alignment marks on base and top section; ensure the seal is locked securely
- › Company name / logo provide clear identification
- › Unique numbering on top and base sections prevents substitution of component parts
- › Bar coding ensures fast and accurate data capture
- › Blister packed for efficient sequential use of seals 84 mm



Minimum size



Unisto Straplock F7115: technical Data

Material

Polystyrene (PS)

Numbering

Laser marked, same numbering on base & top of the seal

Barcoding

Code 128, standard 8 digits (maximum 18 digits) on request code 39 or 2/5 interleaved

Colour

White

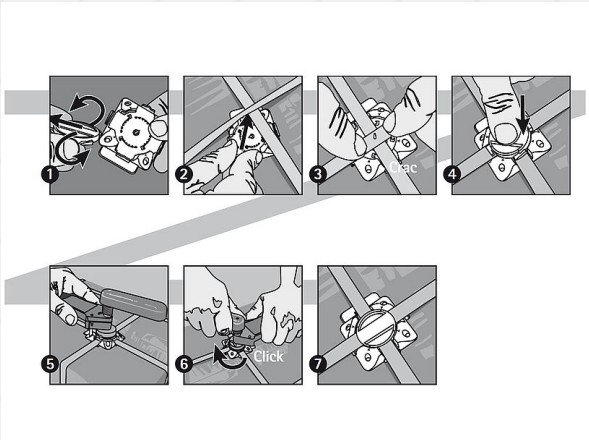
Visual locking marks

Red foil printed on top and base

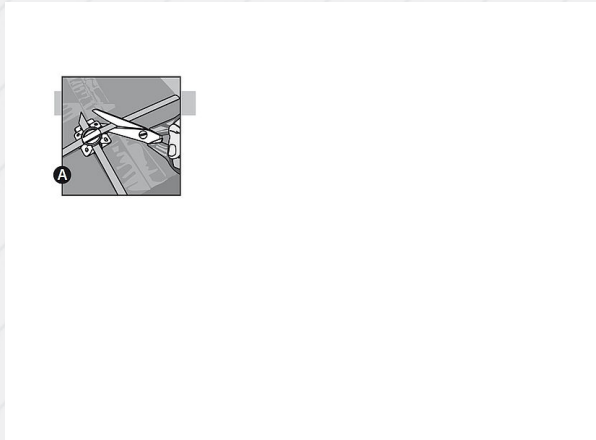


LOGIMON
LOGISTICS MONITORING SOLUTIONS

How to close



How to open



LogiMon Solutions B.V.
Hameinde 1
7371 CS Loenen Gld
The Netherlands

(t) +31 (0)85-0066 082
(e) info@LogiMon.solutions
(w) www.LogiMon.solutions

UNISTO



LOGIMON
LOGISTICS MONITORING SOLUTIONS